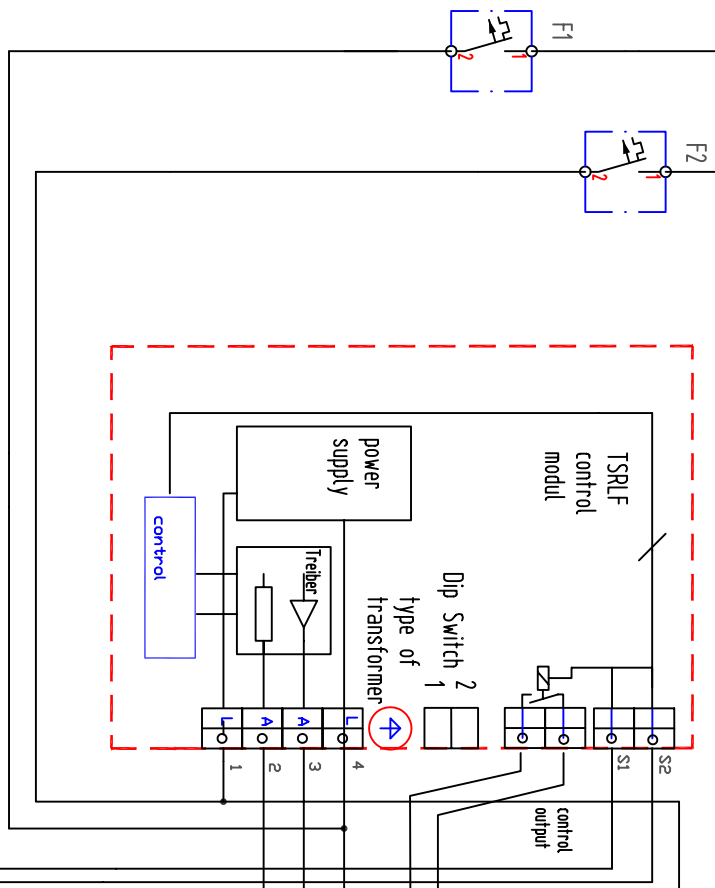


1 2 3 4 5 6 7 8

Line 100V, 230V, 400V, 500V
N, L2
fast fuses allowed e.g. Circuit breaker with nominal current



separately Thyristorblock for desired Amps without heat sink from e.g. IXYS with additional gate resistor bord e.g. from FSM-elektronik

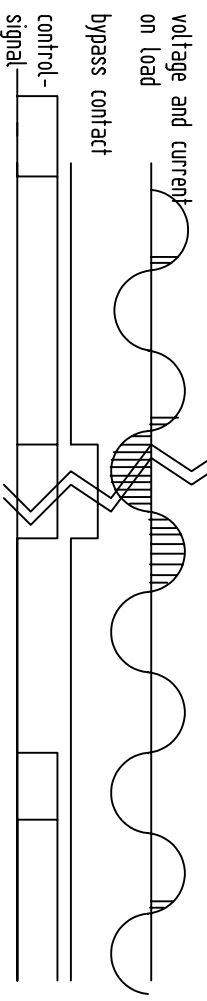
low voltage heating elements

Bypass contactor only in AC1 class

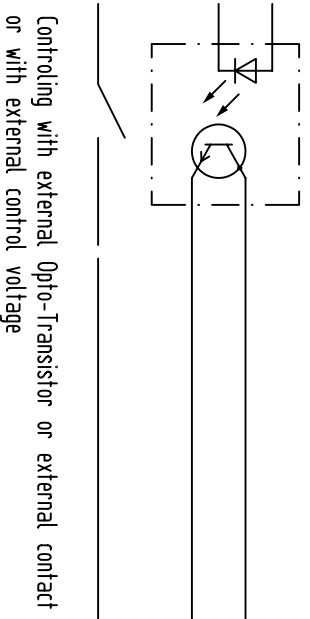
Sample for TSRLF with external thyristor block and additional bypasscontact to avoid heat losses

Sample: fast switching with pulse groups avoiding of inrush currents by premagnetisation

Switch on delay: e.g. 5-20msec, because of line synchronisation of tsrlf
Switch off delay: e.g. 5-20 msec, because of switch off in the same direction of the premagnetisation only small contact arcing and wear, because contact closes after thyristor



transformer switching without inrush currents



Controlling with external Opto-Transistor or external contact or with external control voltage
5 to 28V DC

Revision	Datum	Name	Zust.	Datum	Name	3	4	5	6	7	8
a						Application for TSRLF, with external Thyristor block and bypass contactor					
b											
c											
d											
EMEKO Ing.Büro M.Konstanzer Brüzigenstr. 36 D 79114 Freiburg						TSRLF Applikation 04 TSRLF-app-200A-m-Bypsch-e.dwg					
Blatt: 1 von 01											